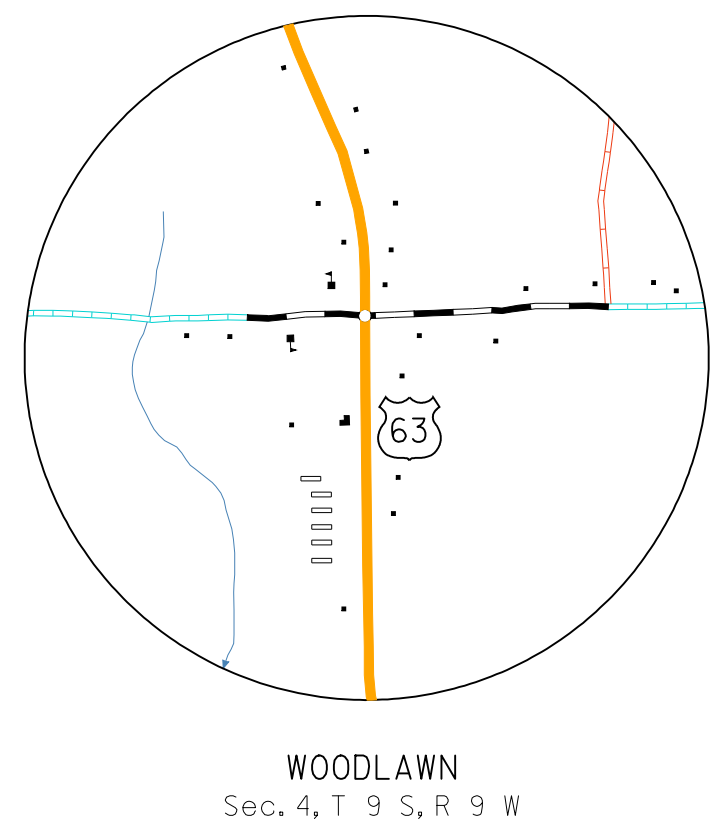
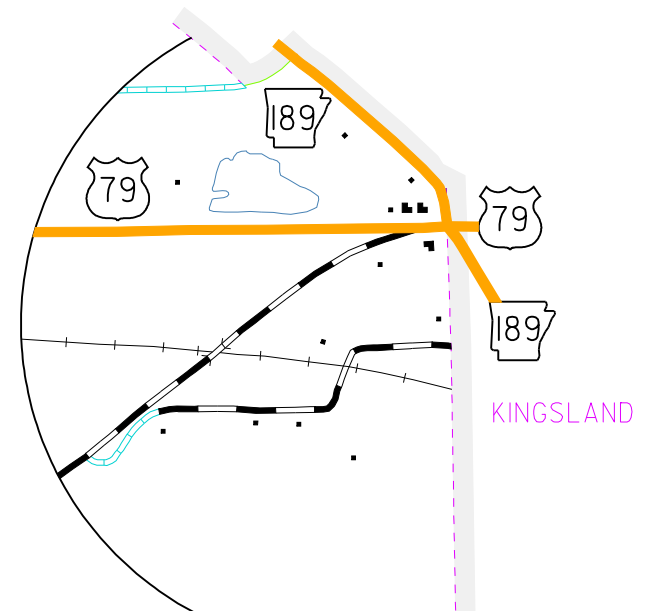


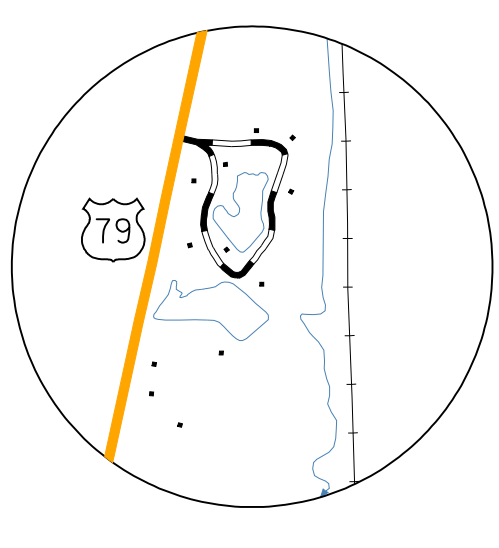
MT. ZION
Sec. 5, 16, 7, 6, 3, R 10 W



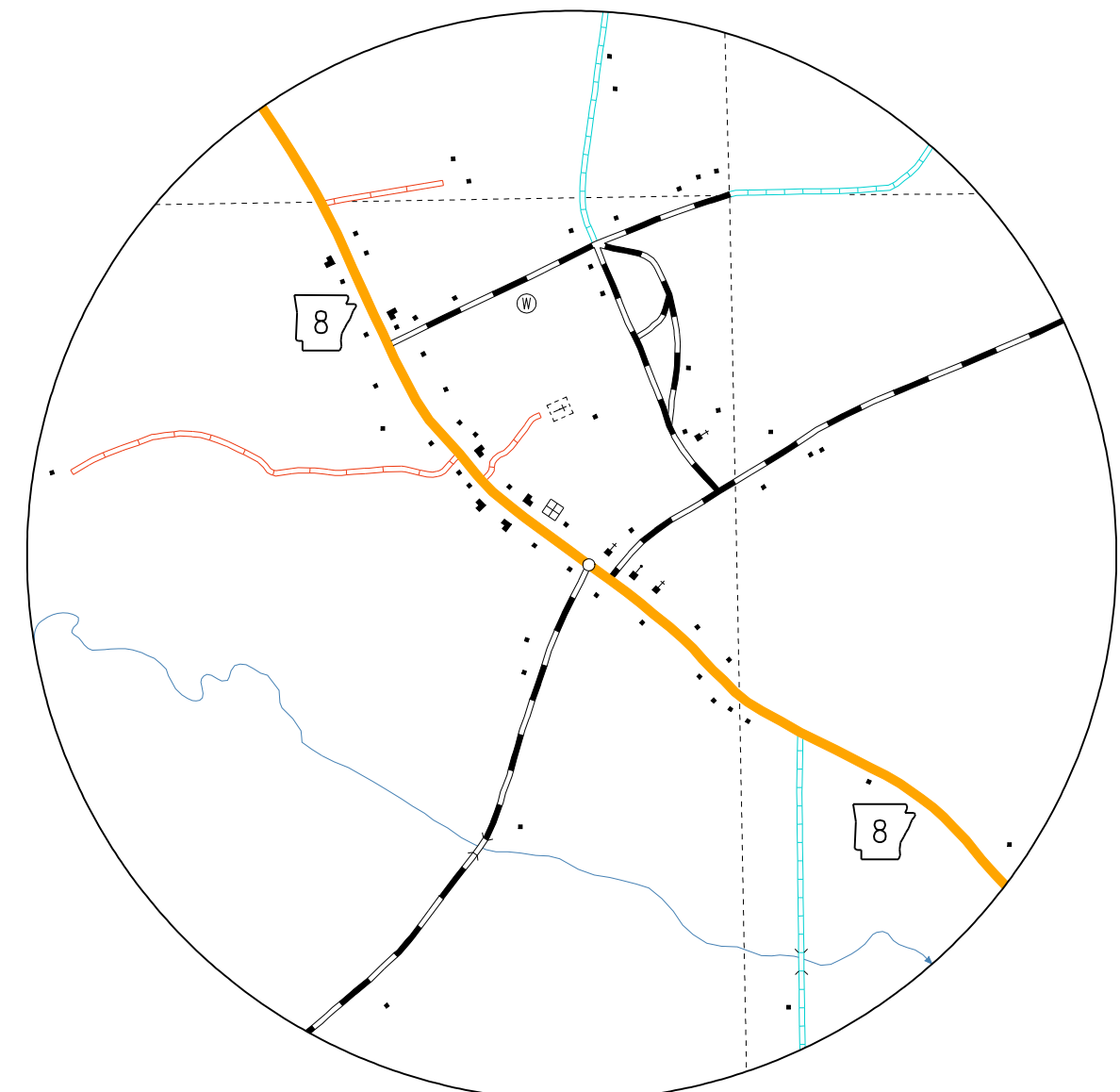
WOODLAWN
Sec. 4, 1, 9, 3, R 9 W



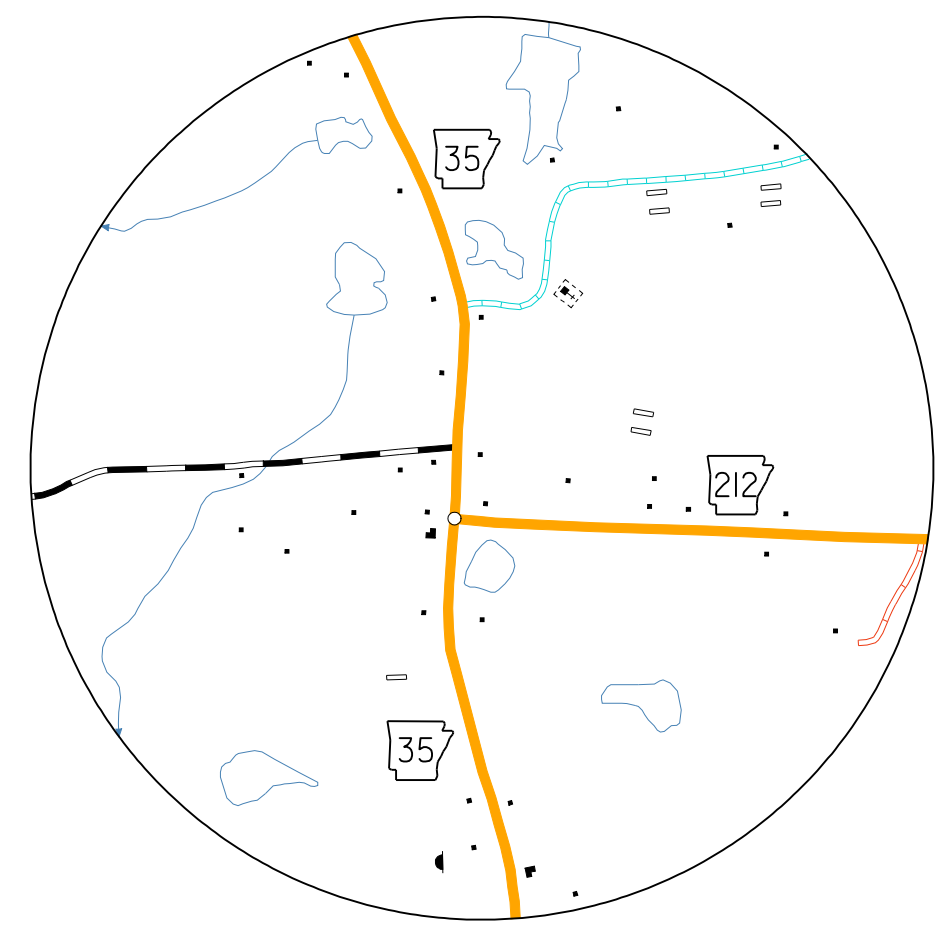
AREA WEST OF KINGSLAND
Sec. 1, 10, 5, R 12 W



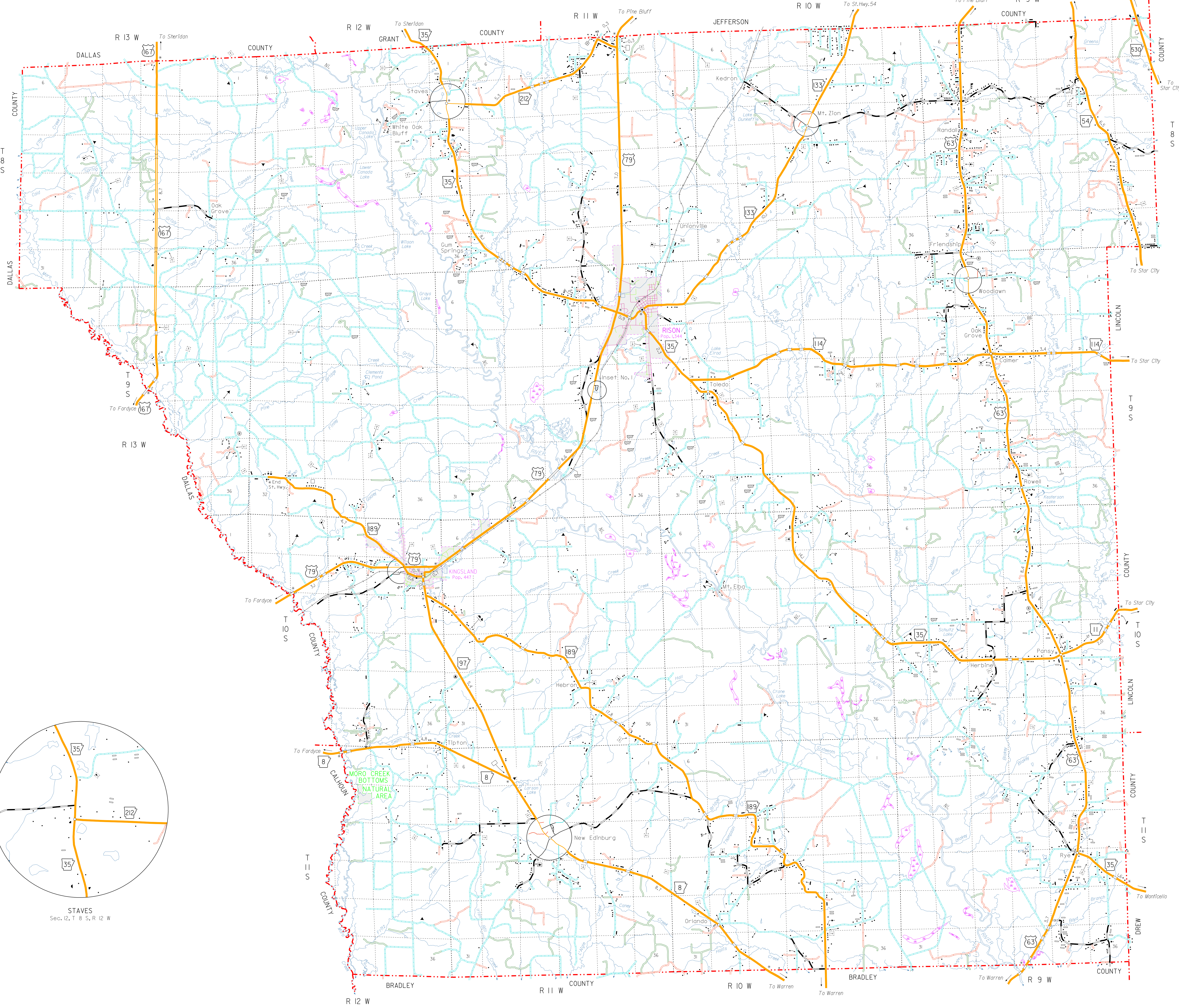
INSET NO. 1
Sec. 14, 1, 9, 3, R 11 W



NEW EDINBURG
Sec. 9, 10, 5, 16, 1, 11, 5, R 11 W



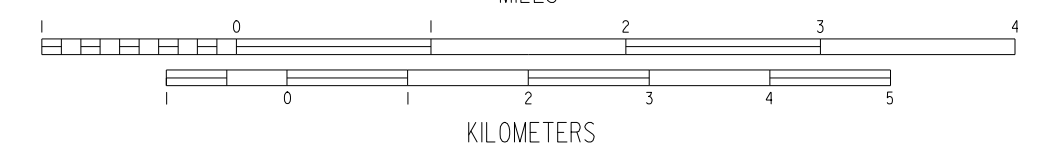
STAVES
Sec. 12, 1, 9, 3, R 12 W



- LEGEND**
- COUNTY BOUNDARY
 - U.S. LAND TOWNSHIP LINE
 - SECTION LINE
 - PARK OR RESERVATION BOUNDARY
 - PAVED STATE OR U.S. HIGHWAY
 - DIVIDED HIGHWAY
 - U.S. NUMBERED HIGHWAY
 - STATE HIGHWAY
 - PAVED LOCAL ROAD
 - GRAVEL LOCAL ROAD
 - GRAVEL & DRAINED LOCAL ROAD
 - UNIMPROVED LOCAL ROAD
 - RAILROAD
 - RAILROAD STATION
 - GRADE CROSSING
 - OVERPASS
 - UNDERPASS
 - HIGHWAY BRIDGE (100 FEET OR MORE IN LENGTH)
 - MILEAGE BETWEEN POINTS
 - LAKE, RESERVOIR OR POND
 - LAKE, RESERVOIR OR POND WITH DAM
 - MARSH OR SWAMP
 - WIDE RIVER OR STREAM
 - INTERMITTENT NAVIGATION
 - SMALL STREAM
 - DRAINAGE DITCH
 - CORPORATE LIMITS AND ROADS THROUGH TOWN
 - COUNTY SEAT
 - OTHER CITIES AND TOWNS
 - FARM UNIT OR DWELLING
 - GROUP OF CLOSELY SPACED DWELLINGS (UP TO 100 FEET SPACING)
 - CHURCH OR OTHER RELIGIOUS INSTITUTION
 - SCHOOL
 - POST OFFICE
 - POST OFFICE AND BUSINESS
 - CEMETERY
 - CHURCH WITH CEMETERY ADJACENT
 - BUSINESS ESTABLISHMENT
 - FACTORY OR INDUSTRIAL PLANT-COTTON GIN
 - SAWMILL
 - GRAVEL PIT
 - QUARRY
 - NURSERY
 - TOWN OR COMMUNITY HALL
 - RADIO OR TELEVISION STATION AND CALL LETTERS
 - AULT, GARAGE OR COUNTY GARAGE
 - FIRE ENGINE HOUSE
 - POWER SUBSTATION
 - PUMPING STATION, OIL OR GAS
 - HISTORICAL MONUMENT
 - OBSERVATION OR LOOKOUT TOWER
 - CAMP OR LODGE
 - SMALL PARK (UP TO STATE, COUNTY, MUNICIPAL, PRIVATE, OR REST AREA)
 - WATER SUPPLY STANDPIPE OR TANK
 - AUTO SALVAGE YARD
 - CHICKEN HOUSE OR OTHER LIVESTOCK

GENERAL HIGHWAY MAP
CLEVELAND COUNTY
ARKANSAS

ARKANSAS STATE HIGHWAY AND TRANSPORTATION DEPARTMENT
PLANNING AND RESEARCH DIVISION
IN COOPERATION WITH
U.S. DEPARTMENT OF TRANSPORTATION
FEDERAL HIGHWAY ADMINISTRATION
SCALE 1:62,500



Copies of this map are available
at a nominal fee from the
Arkansas State Highway and
Transportation Department
P.O. Box 226-11116 Rock, Ark. 72203



NOTE: Enlargements of all congested areas are five times
map scale unless otherwise noted.
Individual maps are available for all active incorporated cities.
Area: 599 Square miles
Population: 48,897, 2000 Census
Map issued 8-7-06, replaces map issued 9-29-97
Field inventory 1978
Map revisions made from aerial photographs taken 3-25-04
Map compilation completed 5-05-06
County map produced using Computer Assisted Cartography
Map revised 8-04-03, widening of part of US-161 to 4-lane, 6-lane
Map revised 9-23-03, added portion of 31-Way, 530 USH

Polyconic Projection North American Datum